

ORDER FORM FOR MOUSE ANTI-HUMAN GCASE ANTIBODY

ANTIBODY OVERVIEW

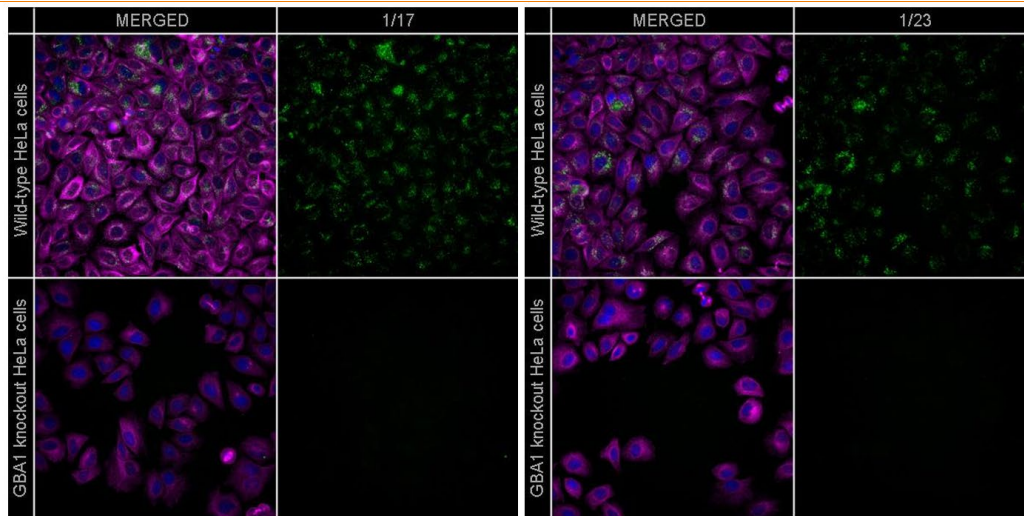
1. PRODUCT INFORMATION

Product Name		Mouse anti-Human GCCase antibody (Clone 1/17)
		Mouse anti-Human GCCase antibody (Clone 1/23)
Species Reactivity		Human
Applications	Suitable	ICC/IF (PFA-fixation only, not compatible with MeOH fixation)
	Unsuitable	WB

2. PRODUCT PROPERTIES

Form		Liquid
Concentration		100µl at 1mg/ml (standard buffer) or 0.77mg/ml (PBS only buffer)
Purity		Protein A purified hybridoma supernatant
Clonality		Monoclonal
Isotype		IgG
Storage Instructions		Shipped at 4°C. Store at +4°C short term (1-2 weeks). Upon delivery, aliquot. Store at -20°C long term. Avoid freeze/thaw.
Storage Buffer	Standard	PBS + 0.02% Azide
	PBS Only	PBS only

3. FIGURES AND PUBLICATIONS



Detection of endogenous human GCCase in WT HeLa cells. WT HeLa (ab255448) and *GBA1* knockout HeLa (ab265038) cells were fixed in 4% PFA for 10 min at RT. Cells were washed and permeabilized with 0.1% Tween-20 in PBS (PBS-T) for 5 min at RT. Following washes with PBS-T, cells were incubated in blocking buffer (1% BSA + 10% normal goat serum + 0.3M glycine in PBS-T) for 1 hr at RT. The anti-GCase antibody was diluted in 1% BSA + PBS-T (0.2µg/mL) and 100µl was added to the wells for overnight incubation at 4°C. Following washes in PBS-T, secondary antibody and DAPI were added to the wells and incubated for 1 hr at RT. Cells were washed in PBS-T and storage buffer (PBS + 0.1% sodium azide) was added prior to storing at 4°C. A High Content Analyser (Perkin Elmer® Operetta®) was used and a maximum intensity projection of 6 confocal planes is shown as representative images. Additional data can be found in PMID 38251062.

ORDER FORM FOR MOUSE ANTI-HUMAN GCASE ANTIBODY

HOW TO ORDER

This antibody will only be available through an MJFF-controlled order system to ensure compliance with the terms of distribution. To access this antibody, you must agree to the following terms that are more fully described in an MTA that shall be provided upon receipt of this request form:

- This antibody is only available to researchers at academic institutions and non-profit organizations.
- Antibodies can only be used for non-commercial, academic non-human scientific research into Parkinson's disease and related disorders.
- Recipients may not permit third parties to use the antibodies. Antibodies cannot be shared with other labs (unless transfer is to a CRO performing research for the requestor).
- Recipients may not sequence the antibody, reverse engineer the antibody, perform any experiment in relation to the sequence, or attempt to determine the chemical/biological structure of the antibody.
- Any publication or presentation of results obtained through the use of the antibody shall acknowledge F. Hoffmann-La Roche Ltd as the original source of the antibody.
- While recipients will own the results obtained using the antibody, recipients will be required to grant a royalty-free deblocking license to all such results to F. Hoffmann-La Roche and its affiliates.

To access the antibody, please complete the below request form and email the completed form to tools@michaeljfox.org. The antibody is free-of-charge but requestors will need to cover shipping costs. We are limited requests to 3 aliquots per formulation.

REQUESTOR DETAILS

Requestor Name:

Requestor Institution:

Requestor Email Address:

SHIPPING DETAILS

Recipient Name:

Recipient Email Address:

Recipient Phone Number (with country code):

Recipient Shipping Address:

Courier (FedEx Preferred):

Courier Account Number (for billing shipping costs):

ANTIBODY REQUEST

	Standard Buffer	PBS Only Buffer
Clone 1/17	Aliquots	Aliquots
Clone 1/23	Aliquots	Not Available