

# Overview

- This presentation was presented by Dr Poul Henning Jensen at the 10<sup>th</sup> annual Parkinson's Disease Therapeutics Conference in New York City on October 24, 2016.
- This presentation discusses characterization of the alpha synuclein aggregate-specific antibody MJFR14 that is available at Abcam.
  - A link to the Abcam product page can be found [here](#).
- The alpha synuclein filament protein used to generate and test this antibody is available from Proteos and can be found in the MJFF Tools Catalog under the Proteins tab as “alpha-synuclein filament protein”.
  - A link to the Proteos order form for the protein can be found [here](#).

10<sup>th</sup> annual PD Therapeutics Conference,  
New York

# "Characterization of MJFF Alpha-Synuclein **Aggregate**-specific Antibodies"

Poul Henning Jensen, MD, Ph.D.

DANDRITE - Danish Research Institute of Translational Neuroscience

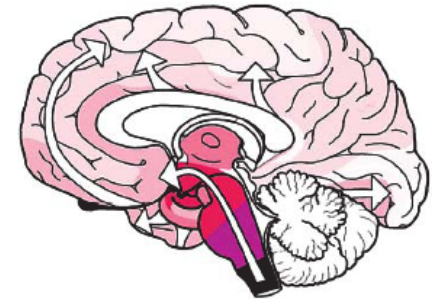
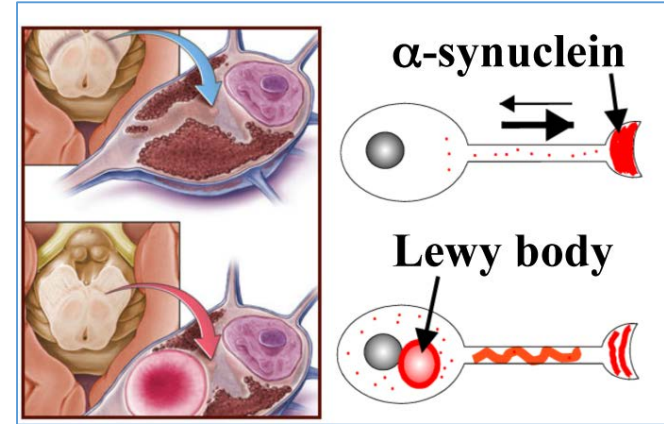
Nordic-EMBL Partnership for Molecular Medicine

Aarhus University, Dept. Of Biomedicine

Denmark

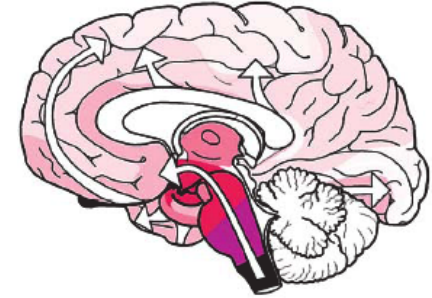
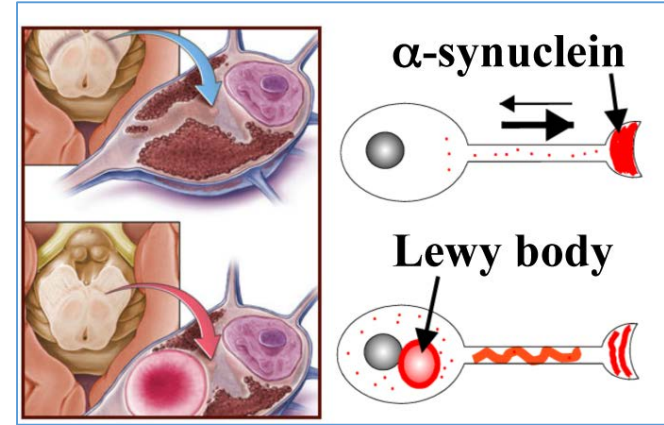
# Why are alpha-synuclein aggregates interesting?

- a-synuclein aggregates (Lewy bodies) has to be present in brains to confirm the clinical diagnosis PD
- a-synuclein mutations can directly cause PD
- **Hypothesis: a-synuclein aggregates cause neurodegeneration and spread the process within the nervous tissue**



# Why are alpha-synuclein aggregates interesting?

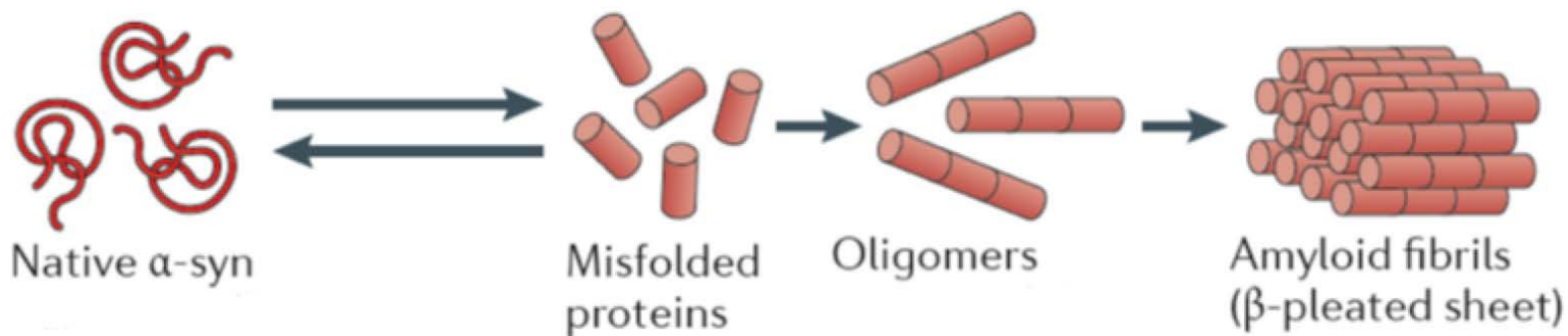
- a-synuclein aggregates (Lewy bodies) has to be present in brains to confirm the clinical diagnosis PD
- a-synuclein mutations can directly cause PD
- **Hypothesis: a-synuclein aggregates cause neurodegeneration and spread the process within the nervous tissue**



You say, aggregates?

# Alpha-synuclein aggregates

## A messy field!



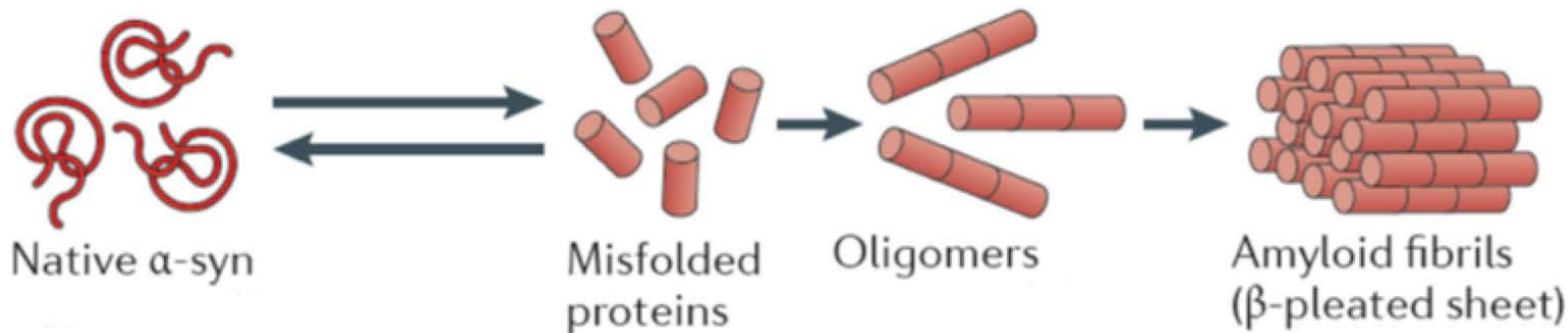
- Can be induced by chemicals, alcohol, acid, detergents, temperature

**Our spontaneously forming oligomers and fibrils can be dissociated into monomers.  
No modifications**

Lashuel, J Mol Biol. 2002  
Linderson, J Biol Chem. 2004  
Betzer, PLoS One. 2015

# Alpha-synuclein aggregates

## A messy field!

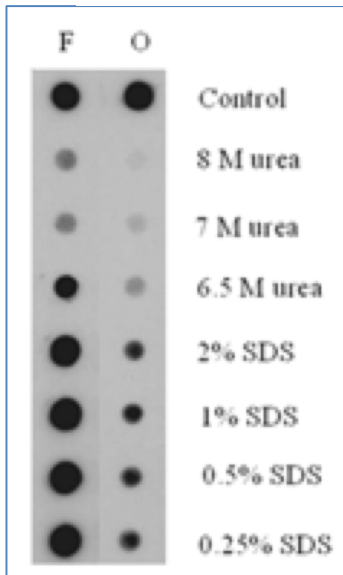
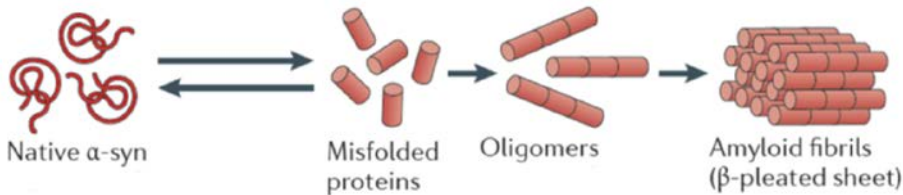


- Can be induced by chemicals, alcohol, acid, detergents, temperature

**Aim: Develop antibodies specific for the alpha-synuclein aggregates developing in Parkinson's disease and other synucleinopathies brain that will expand functional, diagnostic and biomarker studies**

# Can one make an aggregate-specific alpha-synuclein antibody?

- **FILA-1** was raised against a-synuclein filaments in rabbits
- Does not bind monomers
- Recognize filaments >> soluble oligomers
- Epitope is lost upon denaturation of aggregate
- Recognize a-syn in PD brain extracts and in a-syn transgenic mice



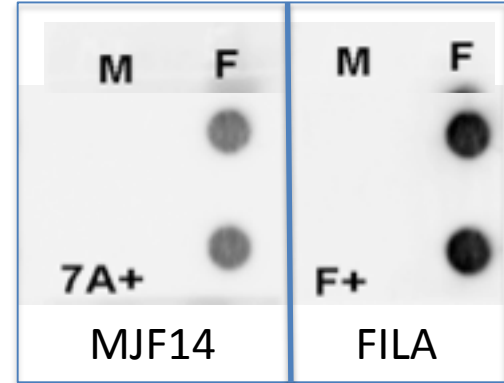
Lindersson, J Biol Chem. 2004  
Paleologou, Brain. 2009  
Colla, J Neurosci. 2012  
Nuber Brain. 2013  
Bousset Nat Commun. 2013  
Rockenstein, Brain. 2014

# Anti-alpha-synuclein filament antibody [MJFR-14-6-4-2]

- Rabbit monoclonal raised against purified recombinant human  $\alpha$ -syn filaments in collaboration between Epitomics/Abcam and P.H. Jensen lab
- Does not bind monomeric soluble  $\alpha$ -syn



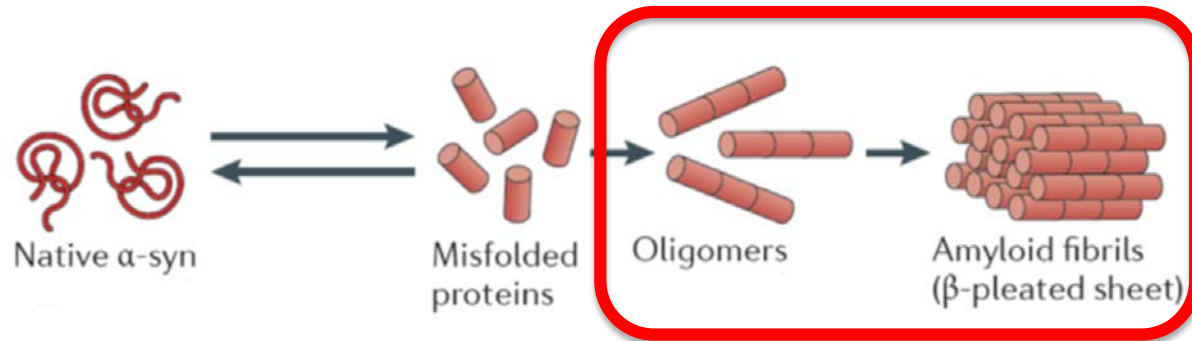
**Preabsorption**  
1 pM MJF14 IgG + 1  $\mu$ M  $\alpha$ -syn bind  $\alpha$ -syn aggregates





# Anti-alpha-synuclein filament antibody [MJFR-14-6-4-2]

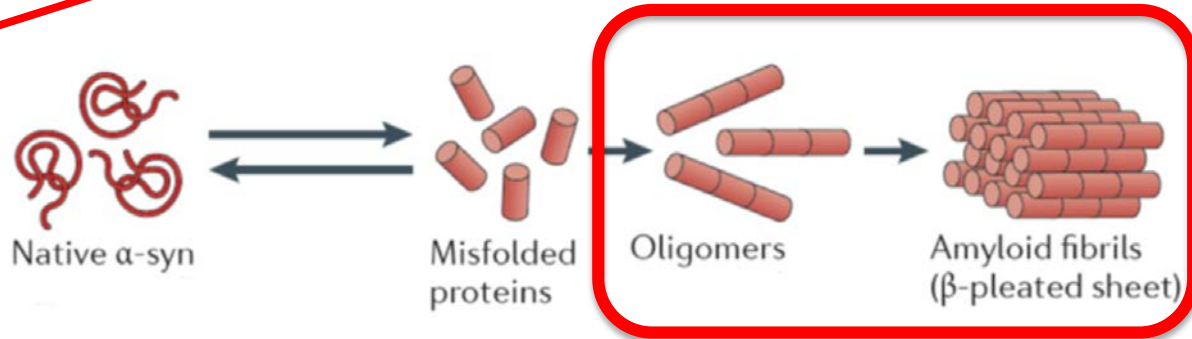
- Rabbit monoclonal raised against purified recombinant human  $\alpha$ -syn filaments in collaboration between Epitomics/Abcam and P.H. Jensen lab
- Does not bind monomeric soluble  $\alpha$ -syn
- Strong binding to oligomers
- Does not bind filaments assembled from C-terminal truncated  $\alpha$ -syn
- Very high affinity



# Anti-alpha-synuclein filament antibody [MJFR-14-6-4-2]

- Rabbit monoclonal raised against purified recombinant human  $\alpha$ -syn filaments in collaboration between Epitomics/Abcam and P.H. Jensen lab
- Does not work on soluble  $\alpha$ -syn
- Strong binding to oligomers
- Does not bind filamentous  $\alpha$ -syn assembled from C-terminal truncated  $\alpha$ -syn
- Very sensitive

**It does not work on Western blotting**



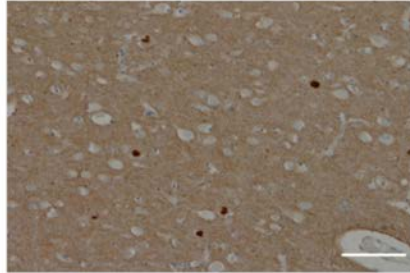
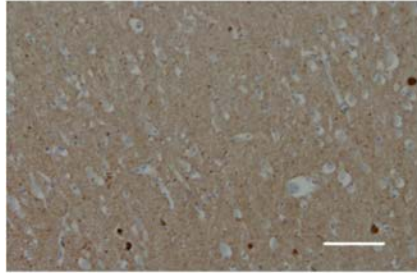
# MJFF funded usability study

- Biochemistry – P.H. Jensen, Aarhus, e.g. immunoprecipitation
- Immunohistochemistry – Janice Holton, London; Glenda Halliday, Sydney; Benoit Giasson, Gainesville; Laura Parkkinen and Javier Alegre Abarrategui, Oxford
- Fluid-phase/biomarker – Jing Zhang, Washington; P.H. Jensen, Aarhus

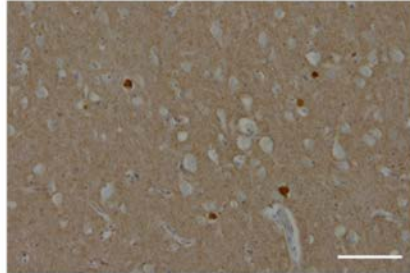
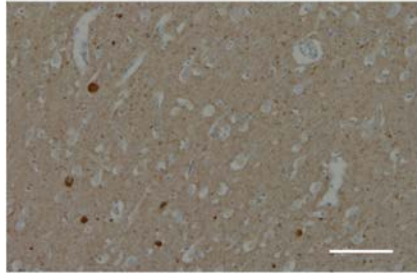
# Immunohistochemical work-up

Formic Acid

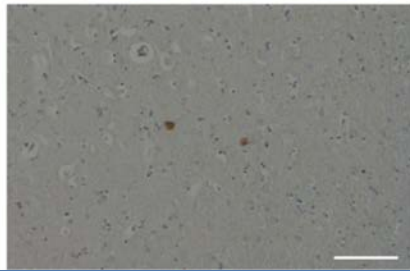
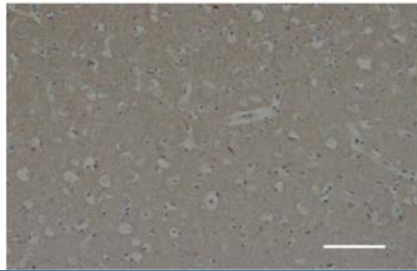
Pressure Cooker



MJF 1/1000



MJF 1/10,000



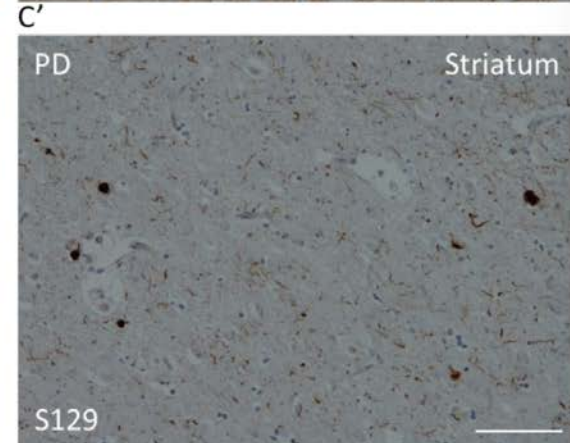
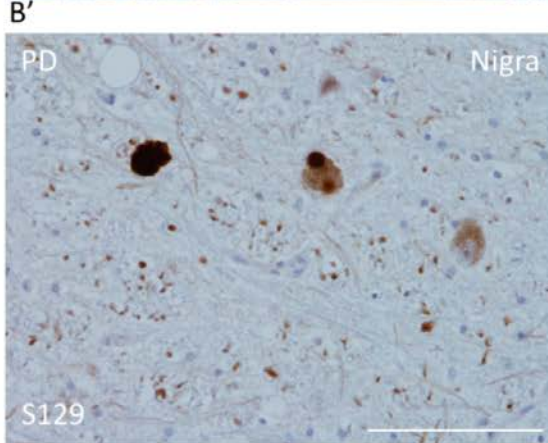
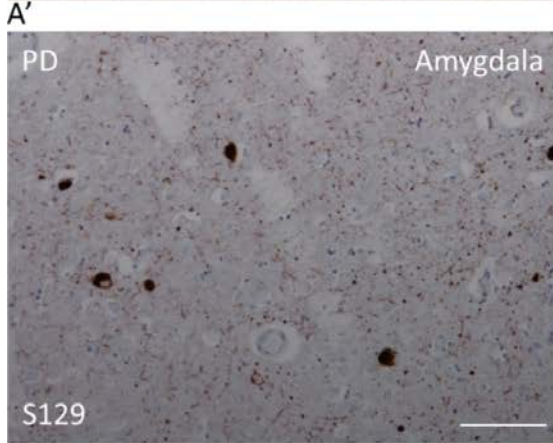
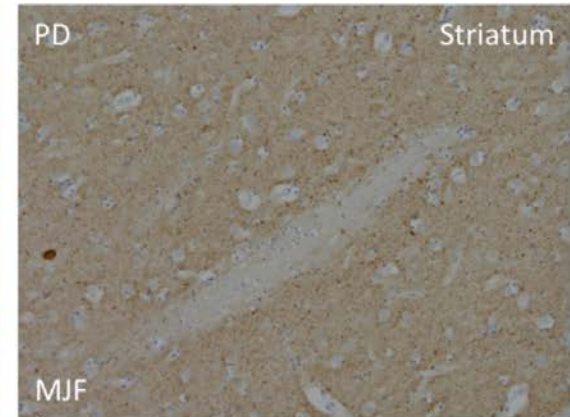
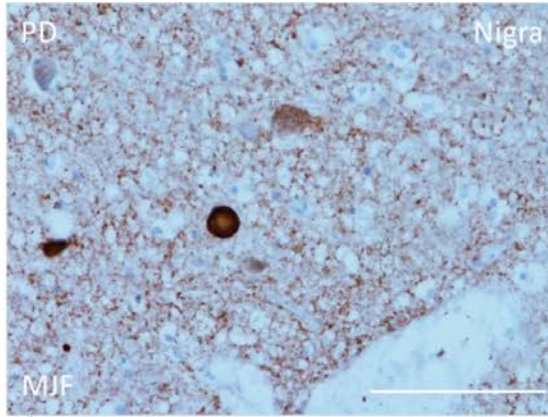
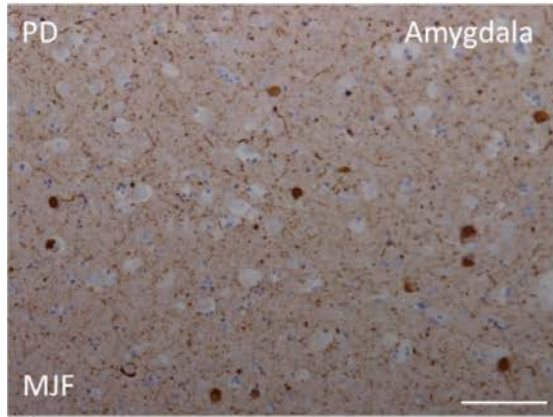
MJF 1/100,000

Protocols will be publicly available soon

*PD cingulate cortex sections*

Holton lab.

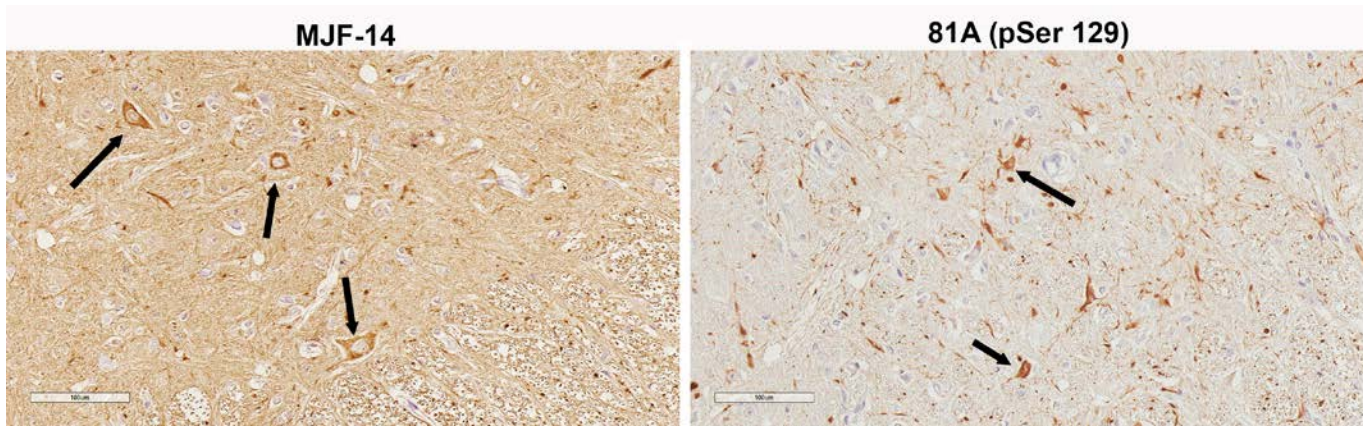
# Immunohistochemical work-up



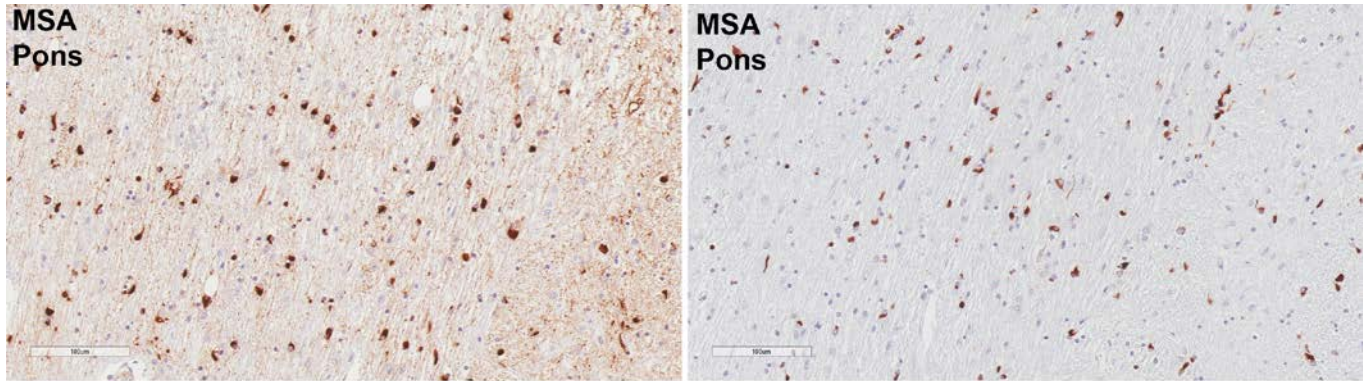
*MJF-14 vs pS129 - PD nigra, amygdala and striatum* ITY Holton lab.

# Immunohistochemical work-up

M83 mouse  
tissue



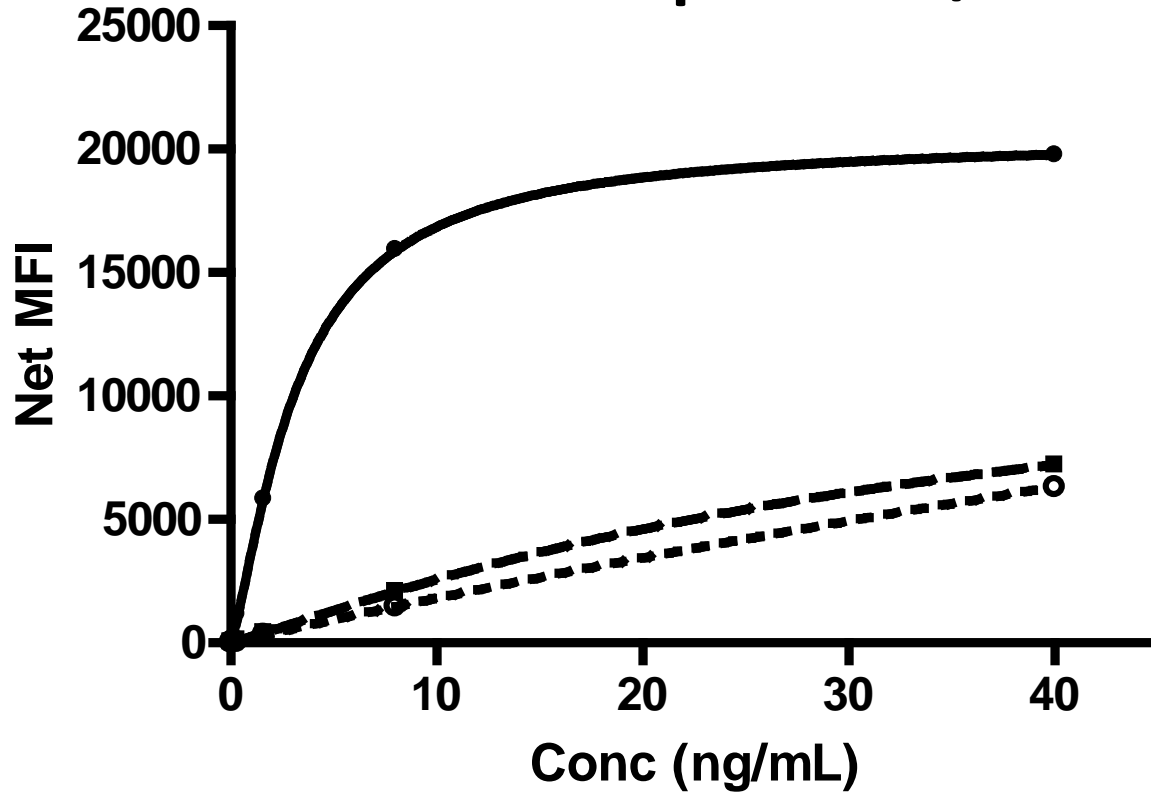
MSA Pons  
tissue



MJF-14 vs pS129: MSA and M83 a-syn transgenic mouse

Giasson lab.

# Fluid-phase/biomarker

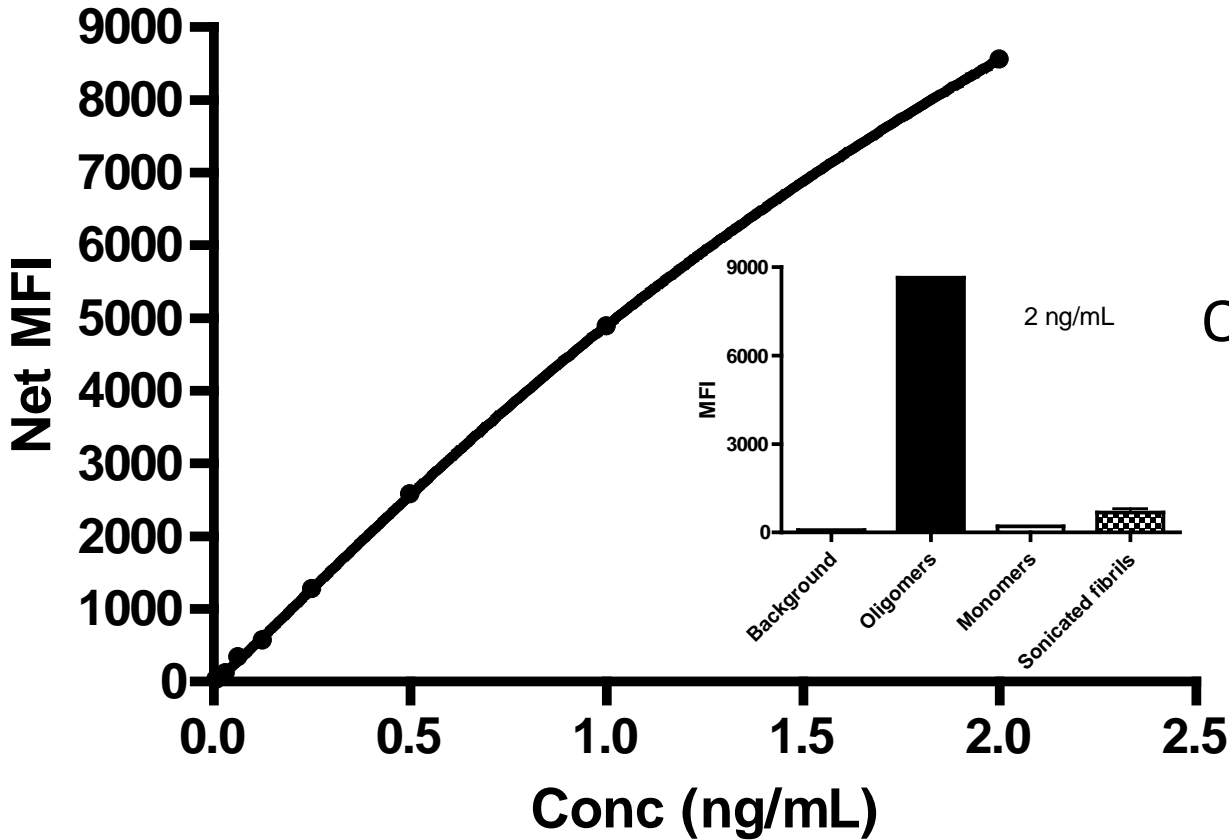


— Oligomers  
- - Fibrils  
· · · Monomers

Oligomeric  $\alpha$ -syn Luminex

Jing Zhang lab.

# Fluid-phase/biomarker



Oligomeric  $\alpha$ -syn Luminex

Jing Zhang lab.

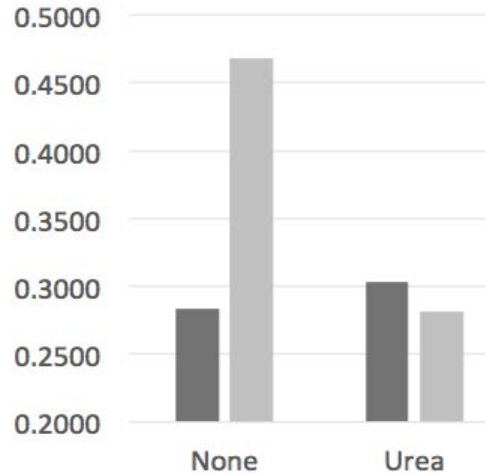


# Fluid-phase/biomarker

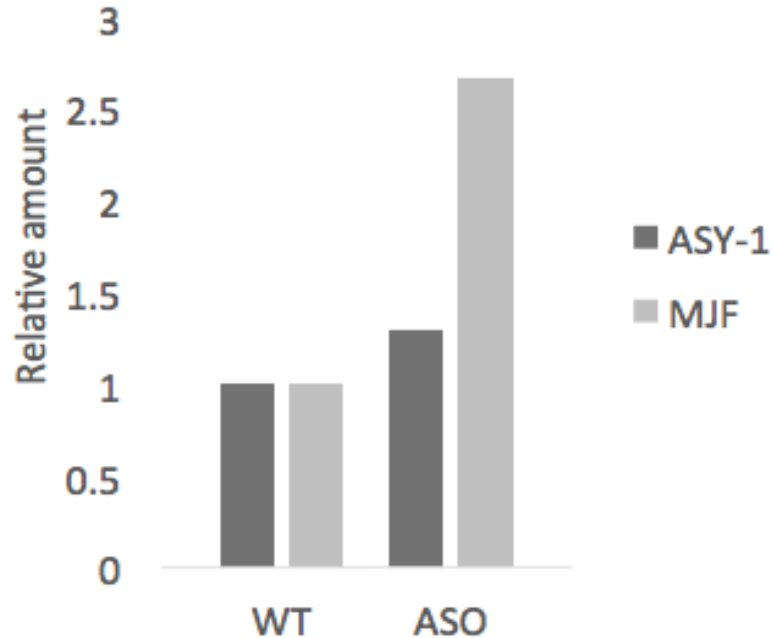
## Conformation specific binding

2,5 ng/ml - MJF ELISA

■ Monomer ■ Oligomer



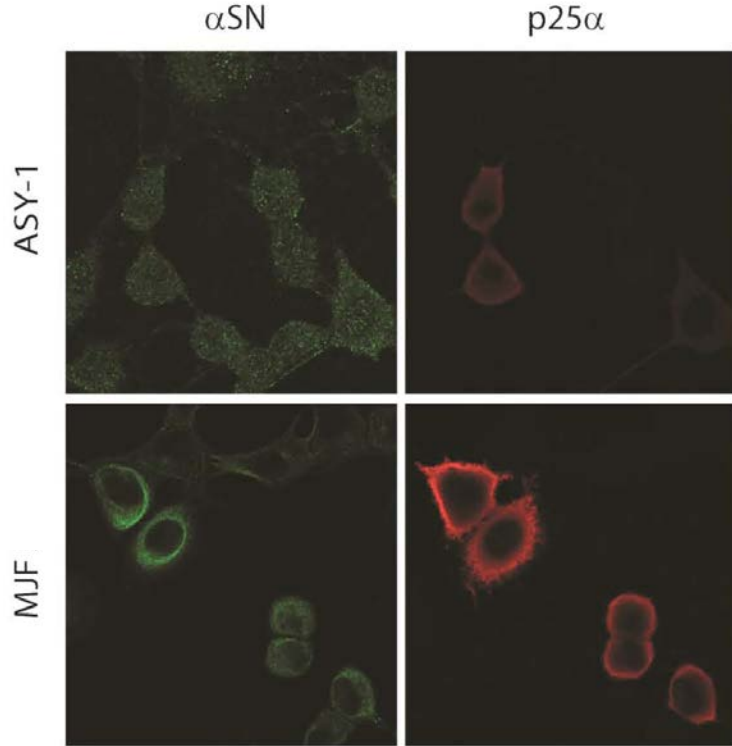
## Increased MJF-14 reactivity in soluble fraction of a-synuclein transgenic mouse brain



Jensen lab.

# Cell biology

## Can we detect subcellular sites of a-synuclein aggregation?



### OLN-AS7 Model

All cells express a-synuclein.

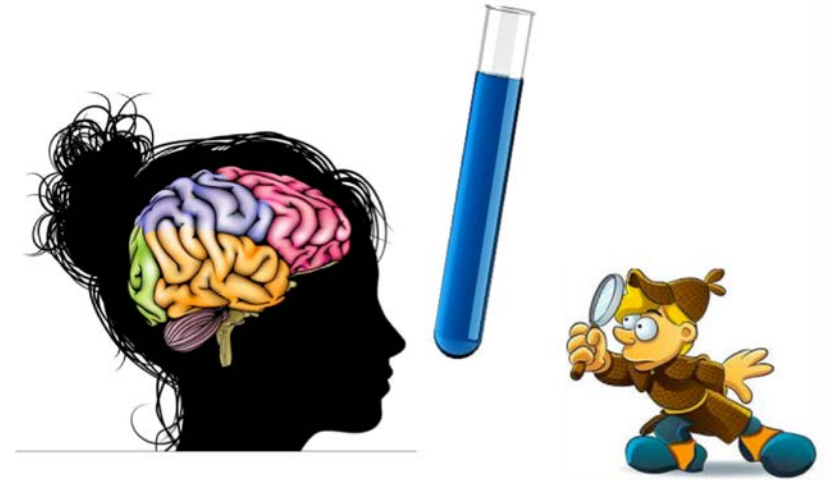
Only cells transiently expression p25a suffers from intracellular aggregation and cytotoxicity

Jensen lab.

# Challenges and possibilities?

**The high affinity, conformation-specific MJF-14 antibody works on multiple platforms and allows us to ask questions in relation to basic biology, disease modeling and biomarkers**

- When is monomeric a-syn a "monomer", unfolded or folded?
- What is the native states of a-synuclein in tissue?
- Does distinct structural species exist at subcellular sites?
- Does specific anatomical and subcellular sites contribute to a-synucleinopathies?



# Acknowledgements

## **DANDRITE/Aarhus University**

- Jette B. Lauridsen
- Cristine Betzer
- Louise B. Lassen

## **Michael J. Fox Foundation**

- Sonal Das
- Terina Martinez

## **Epitomics**

- Liyu Wu

## **External collaborators**

- Janice Holton, UCL
- Glenda Halliday, NeuRA
- Jing Zhang, Washington Univ.
- Benoit Giasson, Univ. Florida
- Laura Parkkinen, Oxford Uni.
- Javier Alegre Abarrategui, Oxford Uni.

## **Funding:**

- Michael J Fox Foundation
- Lundbeck Foundation
- Aarhus University/Dandrite